



# Virginia Healthcare Workforce Briefs

Indicators from the Bureau of Labor Statistics'  
Current Employment Statistics Survey  
**Series 2: Regional & Sectoral Employment**

Series 2, Issue 114

September 2021

## Inside this Brief:

Regional Employment	2
Regional Employment Growth	3
Subsector Employment	3
Subsector Employment Growth	4
Region Map	5
About the Data	6

## Highlights

- ◆ Data in this series are not seasonally adjusted and exhibit short-term volatility from fluctuations in holidays, weekends, weather and other seasonal factors. Estimates for the most recent month are preliminary.
- ◆ Three of Virginia's four regions enjoyed positive Health Care & Social Assistance (HC&SA) employment growth in August. The Rest of Virginia experienced the largest employment gain during the month thanks to the creation of 600 new HC&SA jobs. At the same time, Northern Virginia's HC&SA sector added 400 new jobs, while Richmond increased HC&SA employment by 200. However, all of these employment gains were erased by the loss of 2,400 HC&SA jobs in Hampton Roads during the month.
- ◆ In August, Social Assistance created 900 new HC&SA jobs, a gain that represents a one-month annualized employment growth rate of 15.2%. However, Virginia's three other HC&SA subsectors all lost jobs during the month. Most of these employment losses occurred in Ambulatory Health Care Services, which lost 1,400 jobs in August. Meanwhile, Nursing & Residential Care Facilities and Hospitals saw employment fall by 400 and 300, respectively, during the month.

*Data in this report are not seasonally adjusted. Self-employed persons, including health professionals in private practice, are not included.*

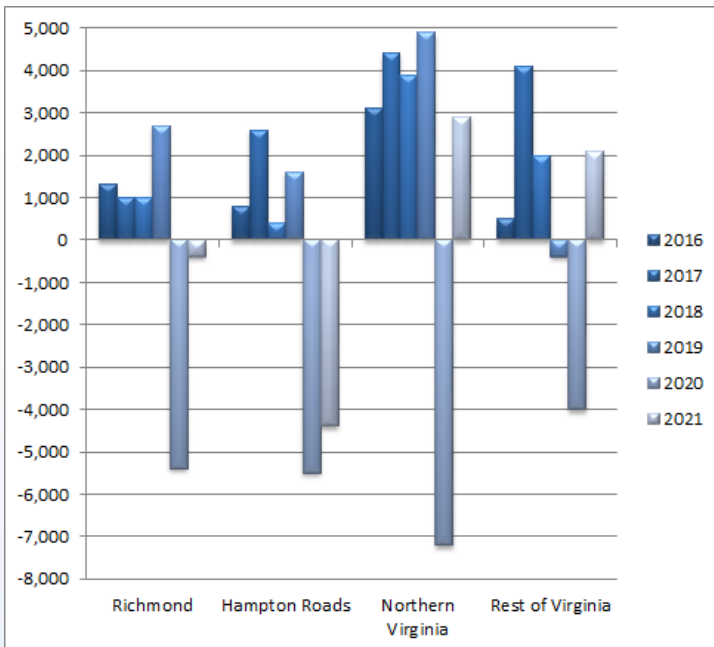
## Data in Brief

Not Seasonally Adjusted*	Employment, in Thousands				Growth Rate, Annualized		
	Aug. 2020	May 2021	July 2021	Aug. 2021	12 Month	3 Month	1 Month
<b>Virginia</b>							
Total Nonfarm	3,823.3	3,901.8	3,914.0	3,911.7	2.3%	1.0%	-0.7%
Health Care & Social Assistance	435.0	444.7	443.5	442.3	1.7%	-2.1%	-3.2%
<b>Hampton Roads</b>							
Total Nonfarm	750.5	763.0	770.9	764.7	1.9%	0.9%	-9.2%
Health Care & Social Assistance	91.4	89.3	90.1	87.7	-4.0%	-7.0%	-27.7%
<b>Northern Virginia</b>							
Total Nonfarm	1,435.0	1,473.1	1,470.2	1,471.5	2.5%	-0.4%	1.1%
Health Care & Social Assistance	130.8	137.5	136.2	136.6	4.4%	-2.6%	3.6%
<b>Richmond</b>							
Total Nonfarm	647.2	644.2	655.0	653.3	0.9%	5.8%	-3.1%
Health Care & Social Assistance	83.3	82.5	83.0	83.2	-0.1%	3.4%	2.9%
<b>Rest of Virginia</b>							
Total Nonfarm	990.6	1,021.5	1,017.9	1,022.2	3.2%	0.3%	5.2%
Health Care & Social Assistance	129.5	135.4	134.2	134.8	4.1%	-1.8%	5.5%

Preliminary estimates are italicized

\*Seasonally adjusted data are adjusted by the Bureau of Labor Statistics to account for weather and other seasonal changes. Since the U.S. Bureau of Labor Statistics does not provide seasonally adjusted data at this level, this series uses non-seasonally adjusted data exclusively. Seasonal variation may account for some of the variation in time series data. When comparing data in this series to other HWDC series or other publications it is important to note whether the data reported have been seasonally adjusted.

### Regional HC&SA Employment Growth, Level



**Figure 1: Annual & YTD Change in HC&SA Regional Employment (Not Seasonally Adjusted, Full-Year Change for 2016-2020, Year-to-Date Change for 2021).**

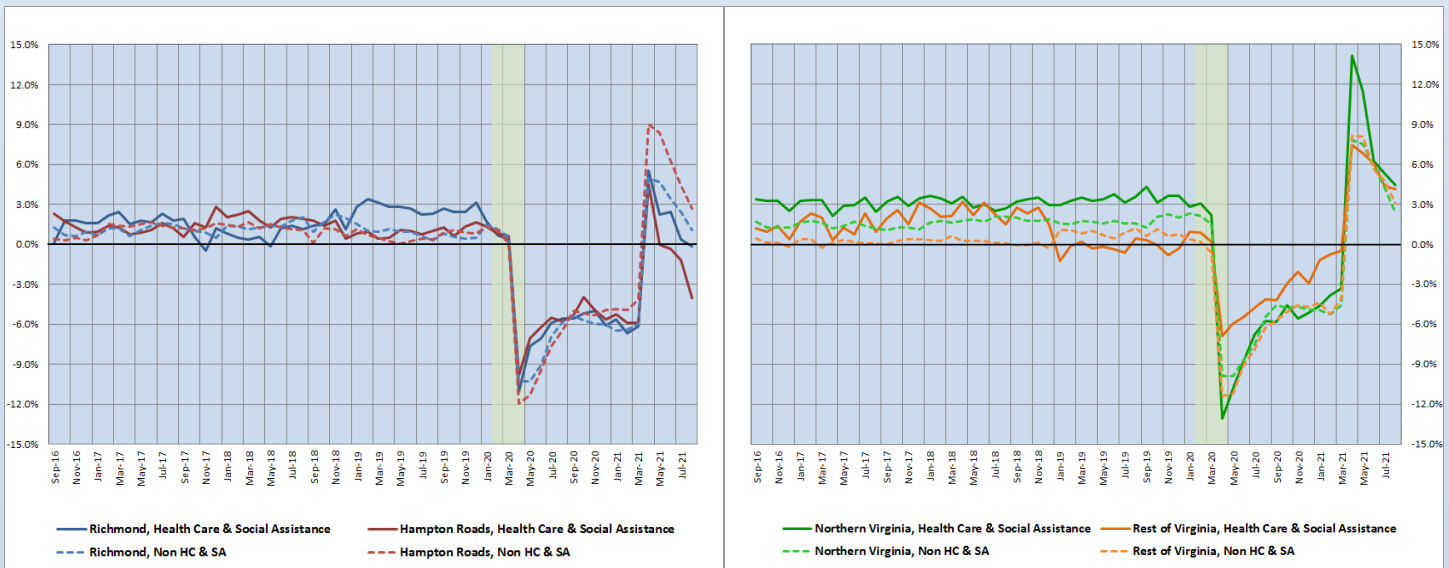
According to the preliminary data released on Friday, September 17, 2021, by the U.S. Department of Labor, Bureau of Labor Statistics, the Rest of Virginia enjoyed solid Health Care & Social Assistance (HC&SA) employment growth in August. This region created 600 new HC&SA jobs, a gain that represents a one-month annualized employment growth rate of 5.5%. With this gain, the Rest of Virginia recovered one-third of the 1,800 jobs that were lost in this region in July. So far this year, the Rest of Virginia has increased HC&SA employment by 2,100.

Northern Virginia is the only other region in the state that has increased year-to-date HC&SA employment. With the addition of 400 new HC&SA jobs in August, a gain that translates into a 3.6% annualized growth rate, Northern Virginia's HC&SA sector has increased employment by 2,900 so far in 2021. Richmond's HC&SA sector also increased employment with the creation of 200 new jobs in August. However, all of these gains were not enough to overcome the loss of 2,400 HC&SA jobs in Hampton Roads during the month.

### Year-Over-Year Regional Employment Growth

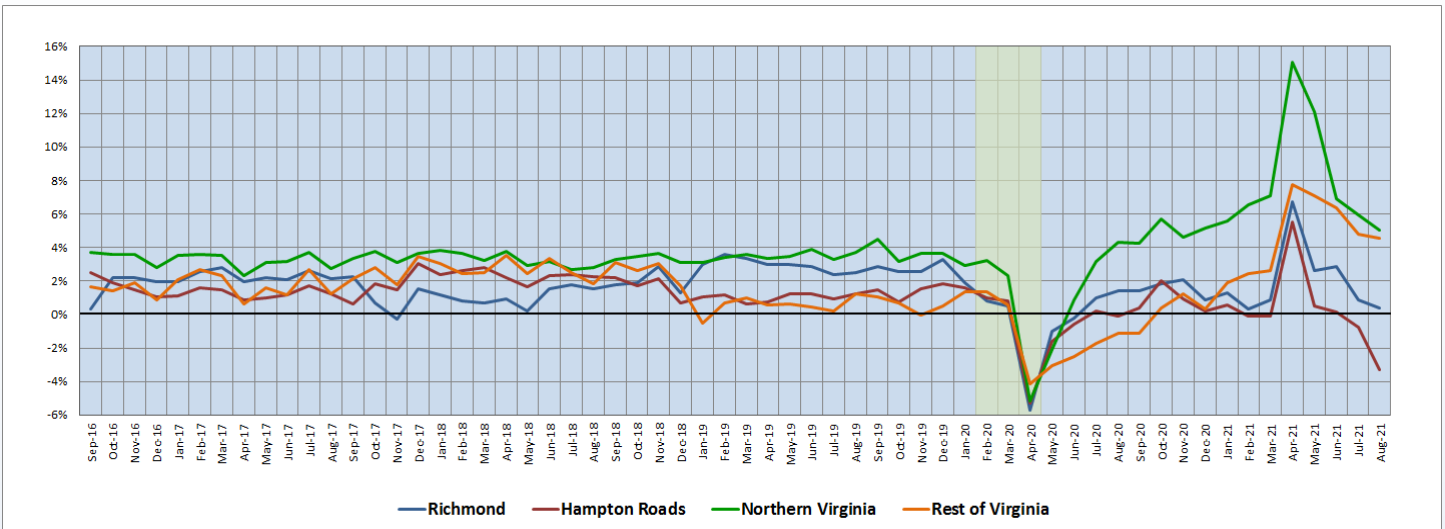
Long-term HC&SA job growth in the state is concentrated entirely in Northern Virginia and the Rest of Virginia, two regions that continue to boast high year-over-year HC&SA employment growth rates despite a slowdown over the past several months. Northern Virginia's HC&SA sector saw its year-over-year employment growth rate fall from 5.34% to 4.43%, while the comparable growth rate for the Rest of Virginia declined from 4.35% to 4.09%. Both Richmond and Hampton Roads also saw their growth rates decline in August. Richmond's HC&SA sector experienced a decline in its year-over-year employment growth rate from 0.36% to -0.12%, while Hampton Roads saw its growth rate fall from -1.21% to -4.05%.

**Figure 2: Year-Over-Year Employment Growth (Not Seasonally Adjusted).**



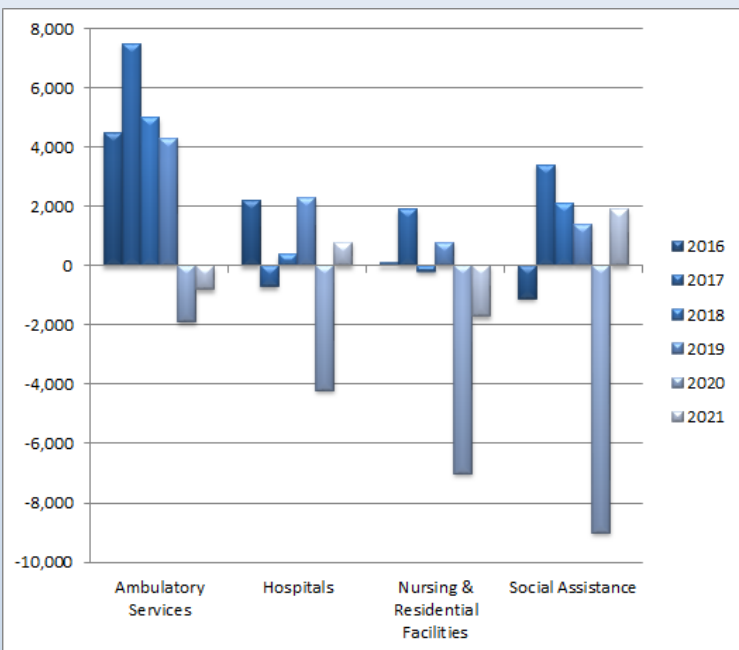
### 12-Month Average Employment Growth by Region

**Figure 3: 12-Month Moving Average, HC&SA Regional Employment Growth Rate (Not Seasonally Adjusted).**



The downward trend in the 12-month HC&SA employment growth rate moving averages across all four of Virginia’s major regions continued in August. Northern Virginia’s HC&SA sector saw its 12-month employment growth rate moving average fall from 5.94% to 5.01%. At the same time, the Rest of Virginia experienced a similar decline in its own moving average from 4.82% to 4.55%. Although both of these moving averages have fallen considerably since April, they remain well above the comparable moving averages for Richmond and Hampton Roads. Richmond’s 12-month HC&SA employment growth rate moving average declined from 0.87% to 0.36%. As for Hampton Roads, its 12-month HC&SA employment growth rate moving average fell to its lowest value since April 2020 after declining from -0.77% to -3.30% in August.

### Subsector Employment Growth



**Figure 4: Annual & YTD Change in HC&SA Subsector Employment (Not Seasonally Adjusted, Full-Year Change for 2016-2020, Year-to-Date Change for 2021).**

One month after experiencing its single largest monthly employment decline in more than one year, Social Assistance enjoyed a rebound in August with the creation of 900 new jobs during the month. Although this month’s employment gain only recovered one-third of July’s decline, this HC&SA subsector continues to enjoy strong long-term job growth. So far this year, Social Assistance has added 1,900 jobs to the state’s economy.

All three of Virginia’s other HC&SA subsectors lost jobs during the month. Most of these employment losses occurred in Ambulatory Health Care Services. In August, this HC&SA subsector lost 1,400 jobs. With this decline, Ambulatory Health Care Services has now lost jobs in three out of the past four months. Meanwhile, Nursing & Residential Care Facilities lost 400 jobs in August. As for Hospitals, this HC&SA subsector saw employment fall by 300 during the month. Despite losing jobs in each of the past two months, Hospitals have still increased employment by 800 so far in 2021.

### Distribution of Growth by Subsector

Not Seasonally Adjusted	Employment, in Thousands				Growth Rate, Annualized		
	Aug. 2020	May 2021	July 2021	Aug. 2021	12 Month	3 Month	1 Month
<b>Virginia</b>							
Health Care & Social Assistance	435.0	444.7	443.5	442.3	1.7%	-2.1%	-3.2%
<i>Ambulatory Health Care Services</i>	187.3	193.0	191.7	190.3	1.6%	-5.5%	-8.4%
<i>Hospitals</i>	104.7	104.5	105.3	105.0	0.3%	1.9%	-3.4%
<i>Nursing &amp; Residential Care Facilities</i>	71.8	70.0	70.5	70.1	-2.4%	0.6%	-6.6%
<i>Social Assistance</i>	71.2	77.2	76.0	76.9	8.0%	-1.5%	15.2%
<b>Hampton Roads</b>							
Health Care & Social Assistance	91.4	89.3	90.1	87.7	-4.0%	-7.0%	-27.7%
<i>Hospitals</i>	21.5	21.2	21.4	21.4	-0.5%	3.8%	0.0%
<b>Northern Virginia</b>							
Health Care & Social Assistance	130.8	137.5	136.2	136.6	4.4%	-2.6%	3.6%
<i>Ambulatory Health Care Services</i>	66.5	70.0	69.0	68.1	2.4%	-10.4%	-14.6%
<i>Hospitals</i>	25.8	26.1	26.2	26.3	1.9%	3.1%	4.7%

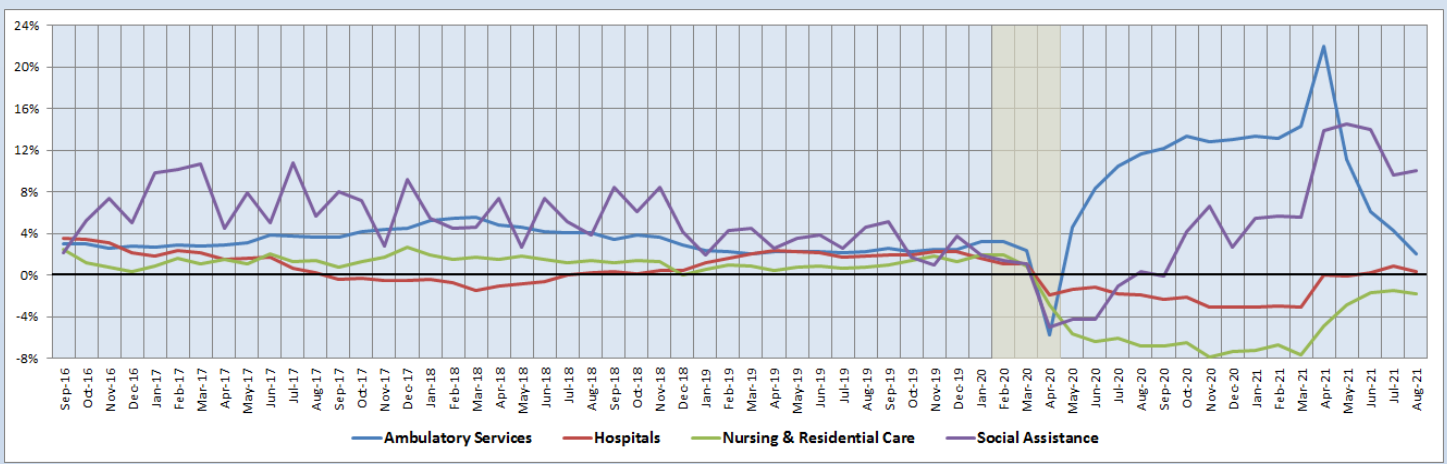
Preliminary estimates are italicized

In August, employment in Social Assistance grew at a 15.2% annualized rate. Its long-term employment growth rate is also quite impressive. Over the past year, Social Assistance has increased employment by 8.0%, a growth rate that is more than four times the overall statewide HC&SA average. At the same time, both Ambulatory Health Care Services and Hospitals have also experienced positive employment growth over the past 12 months. These two HC&SA subsectors currently have 12-month employment growth rates of 1.6% and 0.3%, respectively. Although Nursing & Residential Care Facilities have lost jobs over the past year, it still has a positive three-month annualized employment growth rate of 0.6%.

### 12-Month Average Employment Growth by Subsector

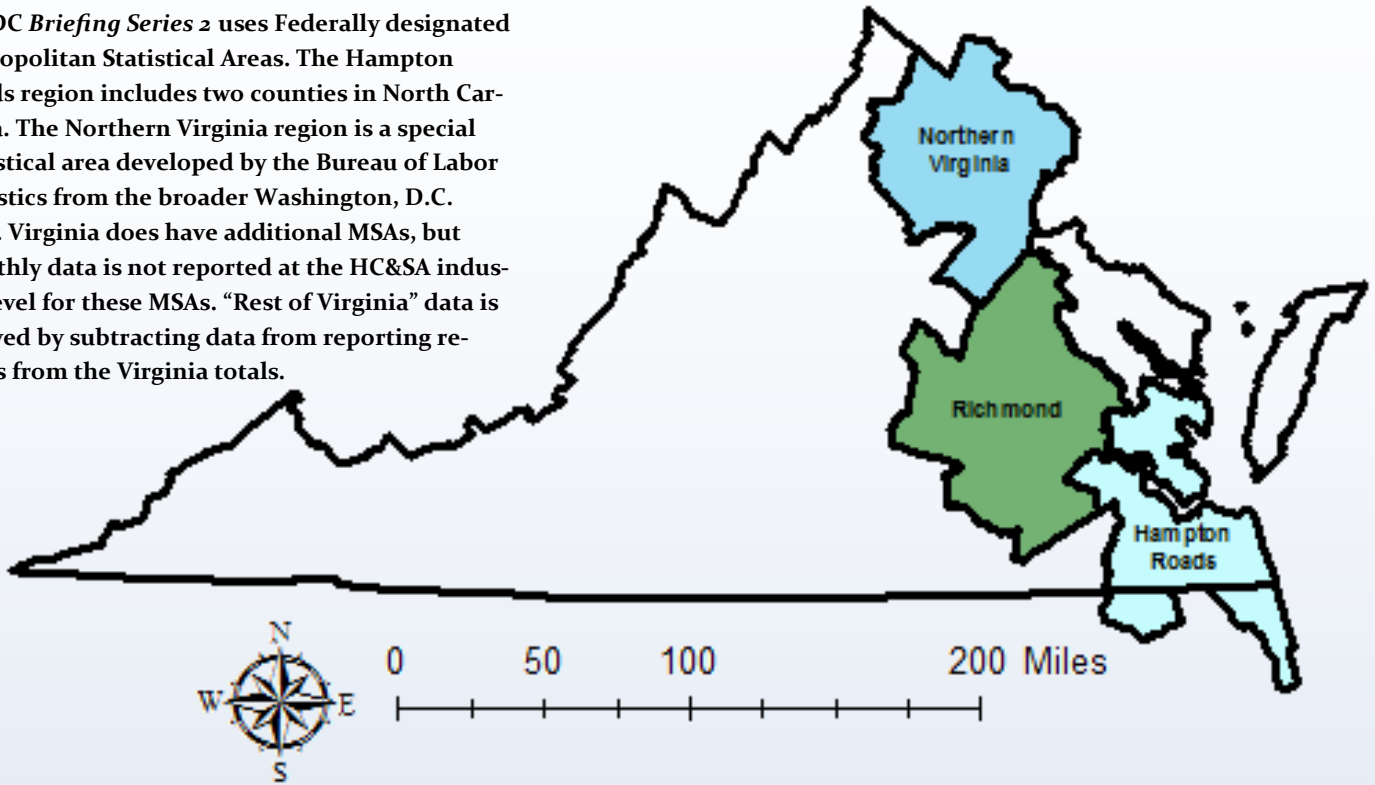
Social Assistance experienced a small uptick in its 12-month employment growth rate moving average in August from 9.63% to 10.01%. At this level, the 12-month employment growth rate moving average of Social Assistance is well above the comparable moving averages of Virginia’s three other HC&SA subsectors. Ambulatory Health Care Services saw their 12-month employment growth rate moving average fall from 4.26% to 2.04%. At the same time, Hospitals saw their own moving average decline from 0.86% to 0.38%. As for Nursing & Residential Care Facilities, their 12-month employment growth rate moving average fell from -1.51% to -1.79%.

**Figure 5: 12-Month Moving Average, HC&SA Subsector Employment Growth Rate (Not Seasonally Adjusted).**



### Region Map

HWDC *Briefing Series 2* uses Federally designated Metropolitan Statistical Areas. The Hampton Roads region includes two counties in North Carolina. The Northern Virginia region is a special statistical area developed by the Bureau of Labor Statistics from the broader Washington, D.C. MSA. Virginia does have additional MSAs, but monthly data is not reported at the HC&SA industry level for these MSAs. “Rest of Virginia” data is derived by subtracting data from reporting regions from the Virginia totals.



### Region Detail

Northern Virginia		Richmond		Hampton Roads	
<i>Northern VA, (Non-standard CES Area 94783)</i>		<i>Richmond, VA (MSA 40060)</i>		<i>Virginia Beach-Norfolk-Newport News, VA-NC (MSA 47260)</i>	
<b>Counties:</b>	<b>Cities:</b>	<b>Counties:</b>	<b>Cities:</b>	<b>Counties:</b>	<b>Cities:</b>
Arlington	Alexandria	Amelia	Colonial Heights	Gloucester	Chesapeake
Clarke	Fairfax	Caroline	Hopewell	Isle of Wight	Hampton
Culpeper	Falls Church	Charles City	Petersburg	James City	Newport News
Fairfax	Fredericksburg	Chesterfield	Richmond	Mathews	Norfolk
Fauquier	Manassas	Dinwiddie		Surry	Poquoson
Loudoun	Manassas Park	Goochland		York	Portsmouth
Prince William		Hanover			Suffolk
Rappahannock		Henrico		<i>Currituck, NC</i>	Virginia Beach
Spotsylvania		King William		<i>Gates, NC</i>	Williamsburg
Stafford		New Kent			
Warren		Powhatan			
		Prince George			
		Sussex			

Healthcare Workforce  
Data Center

Perimeter Center  
9960 Mayland Drive, Suite 300  
Henrico, VA 23233-1463

Phone: (804) 597-4213  
Fax: (804) 527-4434  
E-mail: [hwdc@dhp.virginia.gov](mailto:hwdc@dhp.virginia.gov)  
Website: [www.dhp.virginia.gov/PublicResources/  
HealthcareWorkforceDataCenter](http://www.dhp.virginia.gov/PublicResources/HealthcareWorkforceDataCenter)

*HWDC Staff:*

Elizabeth Carter, PhD <i>Executive Director</i>	Yetty Shobo, PhD <i>Deputy Director</i>
Rajana Siva, MBA <i>Data Analyst</i>	Christopher Coyle <i>Research Assistant</i>

The Department of Health Professions Healthcare Workforce Data Center works to improve the data collection and measurement of Virginia's healthcare workforce through regular assessment of workforce supply and demand issues among the 80 professions and 350,000 practitioners licensed in Virginia by DHP.

The HWDC collects data on Virginia's licensed health professionals through surveys completed during the online license renewal and application process. Survey results and data may be accessed on our website: [www.dhp.virginia.gov/  
PublicResources/HealthcareWorkforceDataCenter/](http://www.dhp.virginia.gov/PublicResources/HealthcareWorkforceDataCenter/).

The HWDC also provides a series of Virginia Healthcare Workforce Briefs based data collected by the U.S. Department of Labor's Bureau of Labor Statistics and the U.S. Department of Commerce' Bureau of Economic Analysis.

Virginia Healthcare Workforce Briefs:

Series 1: State & National Employment (Monthly)

Series 2: Virginia Regional Employment (Monthly)

Series 3: Income & Compensation (Quarterly)

Follow us on. . .

Tumblr: <http://vahwdc.tumblr.com/>

### About the Data

Data in this report are from the U.S. Department of Labor Bureau of Labor Statistics' Current Employment Statistics program. The CES program surveys about 143,000 businesses and government agencies monthly. Unless otherwise noted, this series uses data that are not seasonally adjusted. Seasonal variations related to weather, holidays, weekends, seasons and other predictable variations are apparent in the data. Short-term changes may be related to seasonal changes rather than underlying trends. Data from recent months is preliminary and subject to revision in future releases from the CES. Revisions will be reported in future editions of this series. Unless otherwise noted, the CES data presented in this series:

**Includes:**

- ◆ Data on employed individuals drawing a paycheck (payroll employees).
- ◆ All employees, regardless of role, occupation or hours worked.
- ◆ HC&SA employees in the private sector only.
- ◆ Persons employed by health professionals in private practice.
- ◆ Both government and private sector workers in nonfarm employment data.

**Does not include:**

- ◆ Self-employed workers or volunteers, including health professionals in private practice.
- ◆ HC&SA employees in the public sector. (These are counted as government workers in monthly reports).
- ◆ Information on hours worked or the quality of employment.
- ◆ Government workers in HC&SA level data. (Government workers, regardless of occupation and role, are classified as public sector employees).